



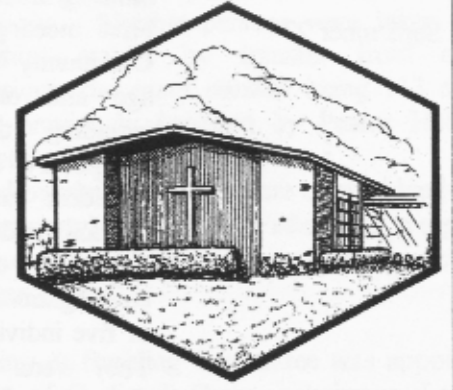
## History Of Good Shepherd Lutheran Church On the Occasion of Its 50<sup>th</sup> Anniversary

2620 West Grauwylar Road  
Irving, Texas 75061

November 8, 1953 to November 8, 2003

### Beginning

In April 1953, the Mission Board of the Texas District, Lutheran Church – Missouri Synod (LCMS) extended a Call to Pastoral Candidate Lester Hall, to begin a mission in the fast growing community of Irving, Texas. Irving's population increased from 2,621 in 1950 to an estimated 22,500 in 1955. A canvas



made by Albert Grauer of the Irving area from April 1 – August 1, 1953, indicated that there were 60 Lutheran and 167 un-churched prospective members. Rev. Hall, a June 1953 graduate of Concordia Seminary, Springfield, Illinois, accepted the call on June 8. He was from Trinity Lutheran Church in Freistadt (Thiensville), Wisconsin where he was baptized, confirmed and ordained. He was married, but had no children at that time. Rev. Hall had spent a two year vicarage as a missionary in Japan from 1950 to 1952.

The first Worship Service was held at 3:30 PM on Sunday August 30, 1953 in the cafeteria of East Elementary School (now J. O. Schulze Elementary) located at 1200 South Irving Heights Drive, with an attendance of 225. Pastor Hall was commissioned in this service by Rev. Elton Bauerkemper. Early events in the congregation's life occurred as follows:

- |                   |  |
|-------------------|--|
| September 6, 1953 | Attendance at worship – 105, Sunday School – 69. Thomas C. Maahs served as organist. Pastor Hall proposed naming the congregation <b>"Good Shepherd."</b>  |
| September 16      | A confirmation class began in the Pastor's home with students Bob Bernhardt, Jeanne Johnson, and Glenn Sharp.  |
| September 20      | Services were held at the James Bowie Jr. High School, located at 600 E. 6 <sup>th</sup> Street, where the auditorium was larger. This facility was used for worship until the congregation occupied its own |

September 27

building in August 1955.

First meeting for organization was held at the Community House in Irving. Males\* 21 years of age and older were invited. Sixteen (16), including the Pastor, were in attendance. Temporary officers elected were Arthur Ebert, President and Earl Woodard, Secretary. By previous understanding Pastor Hall was to serve as Treasurer until formal organization of the congregation. A constitution committee consisting of five individuals was appointed by the president. They were: Herbert G. Schukar, who served as chairman, G. Frank Drum, Eric Kaspar, Mike Janosko and W. R. Turner. A site committee was also selected consisting of Larry Seidner, Charles Garner and Lee Johnson. The name "Good Shepherd Lutheran Church" was chosen.

October 27

Approved providing Lutheran Witness magazine and Portals of Prayer devotional booklets.

November 8

Adopted a constitution (signed by seventeen) which included the name "Good Shepherd Lutheran Church," in a meeting held at the home of Lee Johnson. The first official Officers elected were:

President	Arthur E. Ebert
Vice President	G. Frank Drum
Secretary	B. Earl Woodard
Treasury	Larry Seidner
Financial Sec	John F. Bogner

The first Elders elected were: Lee F. Johnson, Eric J. Kaspar, Jr., Thomas F. Maahs, and Herbert G. Schukar. The first Trustees elected were: Arthur E. Ebert, Eric J. Kaspar, Jr., G. Frank Drum, Earl Woodard, Larry Seider and John F. Bogner. The first Sunday School Superintendent

\* The Voters' Assembly served as the governing body of the congregation and was limited to male members, 21 years of age and older. This was not changed until women's suffrage was granted in 1970.

November 15

and Secretary were respectively Paul Terrell and Alma Maahs. Eligible persons were taken into membership, mainly by transfer from other congregations, the exact number being 113 souls plus six previously baptized by Pastor Hall in Irving (total of 119).

Approved purchase of a five acre tract of land (the current property) from W. W. Fisher, Sr., at a price not to exceed \$10,500. Also, approved purchase of an organ for \$225.

January 3, 1954

A Planning & Building Committee was appointed consisting of G. Frank Drum - chairman, Lee F. Johnson and Thomas Maahs. Approved the formation of a Walther League.

Closed Charter Membership\*

January 11

Chartered by the State of Texas (Incorporated).

January 17

Took possession of the W. W. Fischer, Jr., five acre tract of land.

April 4

Approved \$30,000 for the first physical plant.

June 16

Chose Joseph F. Gordon as Architect.

August 15

Asked Mission Board to approve \$38,235.77 for a building contract.

August 29

Approved Elmore M. Klenk & Son as contractor.

October 3

Broke ground for the Parish Hall, approximately 94' long x 33' wide.

March 20, 1955

Set the cornerstone (a cement plaque), made by Bernhard Porath, in the NW corner of the Parish Hall with the inscription: "To the Glory of God - 1955."

\* A clearly identified list of charter members has not been found. However, a list of those who joined the church in 1953 is recorded in the back of the Parish Hall Dedication pamphlet dated August 7, 1955. This list has been corroborated with the membership section of the Parish Record Book for 1953. From these two sources it appears there were 137 Charter Members. Of the Charter Members, only four are currently members: At time of Charter, adult Communicant Member - **Catherine Woodard**; Baptized Members, **Beverly Craft, Sharon (Stevens) Josefy, and Mary Woodard**. The complete list of Charter members can be found at the end of this history

September 27

building in August 1955.

First meeting for organization was held at the Community House in Irving. Males\* 21 years of age and older were invited. Sixteen (16), including the Pastor, were in attendance. Temporary officers elected were Arthur Ebert, President and Earl Woodard, Secretary. By previous understanding Pastor Hall was to serve as Treasurer until formal organization of the congregation. A constitution committee consisting of five individuals was appointed by the president. They were: Herbert G. Schukar, who served as chairman, G. Frank Drum, Eric Kaspar, Mike Janosko and W. R. Turner. A site committee was also selected consisting of Larry Seidner, Charles Garner and Lee Johnson. The name "Good Shepherd Lutheran Church" was chosen.

October 27

Approved providing Lutheran Witness magazine and Portals of Prayer devotional booklets.

November 8

Adopted a constitution (signed by seventeen) which included the name "Good Shepherd Lutheran Church," in a meeting held at the home of Lee Johnson. The first official Officers elected were:

President	Arthur E. Ebert
Vice President	G. Frank Drum
Secretary	B. Earl Woodard
Treasury	Larry Seidner
Financial Sec	John F. Bogner

The first Elders elected were: Lee F. Johnson, Eric J. Kaspar, Jr., Thomas F. Maahs, and Herbert G. Schukar. The first Trustees elected were: Arthur E. Ebert, Eric J. Kaspar, Jr., G. Frank Drum, Earl Woodard, Larry Seider and John F. Bogner. The first Sunday School Superintendent

\* The Voters' Assembly served as the governing body of the congregation and was limited to male members, 21 years of age and older. This was not changed until women's suffrage was granted in 1970.

November 15

and Secretary were respectively Paul Terrell and Alma Maahs. Eligible persons were taken into membership, mainly by transfer from other congregations, the exact number being 113 souls plus six previously baptized by Pastor Hall in Irving (total of 119).

Approved purchase of a five acre tract of land (the current property) from W. W. Fisher, Sr., at a price not to exceed \$10,500. Also, approved purchase of an organ for \$225.

January 3, 1954

A Planning & Building Committee was appointed consisting of G. Frank Drum - chairman, Lee F. Johnson and Thomas Maahs. Approved the formation of a Walther League.

Closed Charter Membership\*

January 11

Chartered by the State of Texas (Incorporated).

January 17

Took possession of the W. W. Fischer, Jr., five acre tract of land.

April 4

Approved \$30,000 for the first physical plant.

June 16

Chose Joseph F. Gordon as Architect.

August 15

Asked Mission Board to approve \$38,235.77 for a building contract.

August 29

Approved Elmore M. Klenk & Son as contractor.

October 3

Broke ground for the Parish Hall, approximately 94' long x 33' wide.

March 20, 1955

Set the cornerstone (a cement plaque), made by Bernhard Porath, in the NW corner of the Parish Hall with the inscription: "To the Glory of God - 1955."

\* A clearly identified list of charter members has not been found. However, a list of those who joined the church in 1953 is recorded in the back of the Parish Hall Dedication pamphlet dated August 7, 1955. This list has been corroborated with the membership section of the Parish Record Book for 1953. From these two sources it appears there were 137 Charter Members. Of the Charter Members, only four are currently members: At time of Charter, adult Communicant Member - **Catherine Woodard**; Baptized Members, **Beverly Craft, Sharon (Stevens) Josefy, and Mary Woodard**. The complete list of Charter members can be found at the end of this history



August 7 Dedicated the Parish Hall. Speaker for the 3:30PM Service was Rev. Elton Bauerkemper, Pastor of Our Savior Lutheran Church, Dallas. Speaker for the 8 PM Service was Rev. Alfred O. Rast, of Austin, Texas, representative of the Mission Board. A double console Consonata organ, donated by the John F. Bogner family, was also dedicated. The dedication pamphlet recorded membership as:

	<u>1953</u>	<u>1954</u>	<u>1955 (June)</u>
Communicants	69	94	118
Members (Baptized)	124	186	237

August 15-26 Conducted the first Vacation Bible School with almost 200 students

October 9 The Congregation became financially self sustaining.

April 15, 1956 Began Sunday evening services in addition to morning services.

May 27 Discussed building deficiencies. Some corrective action was eventually taken by the contractor; but leveling problems exist to the present, as can be observed in the Parish Hall floor.

September 9 Approved purchasing a 16' strip of land between church property and Beacon Hill Street, amounting to about 0.15 acres, for \$1,000. Agreed to sponsor a Boy Scout Troop.

After four fruitful and blessed years of work in the Irving community Pastor Hall resigned, effective April 28, 1957, to accept a call from a congregation in Oklahoma City. He had previously received two or more calls. Membership stood at 169 Communicants and 320 Baptized.

In a special meeting on May 24, 1957, a Call List was developed and the first call was extended to Rev. Elmer G. Neunaber. He did not accept. During the extended pastoral vacancy that followed Pastor Hall's resignation, Rev. Elton Bauerkemper served Good Shepherd. After the first four calls were returned, a new Call List was made and a call extended

to Rev. Paul J. Schumacher, a native of Louisville, Kentucky, on November 22, 1957. Pastor Schumacher was on his first assignment in the Paris, Clarksville and Sulphur Springs parish of NE Texas, following graduation in 1955 from Concordia Seminary, St. Louis. He accepted the call and was installed as the second Pastor of Good Shepherd on January 5, 1958. Pastor Schumacher was married, but had no children.

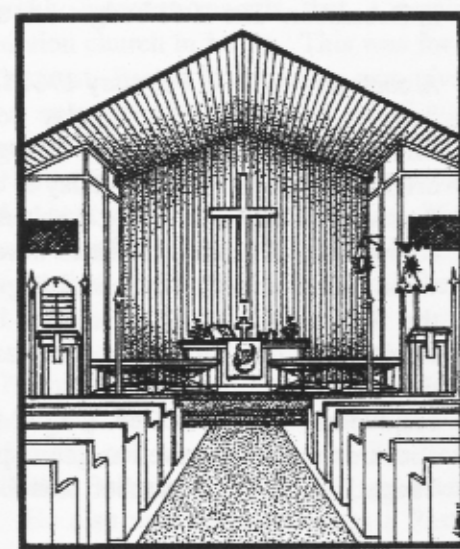
June 9, 1957 Approved connecting to City water & Lone Star Gas company.

October 11 Approved acceptance of pews from Zion Lutheran, Dallas.

December 13 Adopted a budget of \$17,680 for 1958.

### Growth

Events and actions in 1958 and 1959 indicated a growing congregation. In the spring of 1958 partitions were built for use in the back of the parish hall to separate Sunday School classes. In September, \$4,500 was approved to curb, gutter and pave the front parking lot and to pour sidewalks. Early in 1959 the Sunday school was using some of the upper rooms of Southwest Bank & Trust Company where Good



Shepherd had moved its banking account the previous year. This bank was located next door to the east of Good Shepherd. The 1959 budget, original amount unknown, was revised in April to \$23,126.40. In November the congregation was billed \$849.60 by the City for curbing of Grauwlyer\*

\* Grauwlyer Street, pronounced "Garwheeler," was named after John Grauwlyer, a native of Basel, Switzerland, who came to the United States in 1854 at age 17 and eventually ended up farming 365 acres of land near Bachman Lake in Dallas. There he served five years as road overseer and this is possibly why a street was named for him



August 7 Dedicated the Parish Hall. Speaker for the 3:30PM Service was Rev. Elton Bauerkemper, Pastor of Our Savior Lutheran Church, Dallas. Speaker for the 8 PM Service was Rev. Alfred O. Rast, of Austin, Texas, representative of the Mission Board. A double console Consonata organ, donated by the John F. Bogner family, was also dedicated. The dedication pamphlet recorded membership as:

	<u>1953</u>	<u>1954</u>	<u>1955 (June)</u>
Communicants	69	94	118
Members (Baptized)	124	186	237

August 15-26 Conducted the first Vacation Bible School with almost 200 students

October 9 The Congregation became financially self sustaining.

April 15, 1956 Began Sunday evening services in addition to morning services.

May 27 Discussed building deficiencies. Some corrective action was eventually taken by the contractor; but leveling problems exist to the present, as can be observed in the Parish Hall floor.

September 9 Approved purchasing a 16' strip of land between church property and Beacon Hill Street, amounting to about 0.15 acres, for \$1,000. Agreed to sponsor a Boy Scout Troop.

After four fruitful and blessed years of work in the Irving community Pastor Hall resigned, effective April 28, 1957, to accept a call from a congregation in Oklahoma City. He had previously received two or more calls. Membership stood at 169 Communicants and 320 Baptized.

In a special meeting on May 24, 1957, a Call List was developed and the first call was extended to Rev. Elmer G. Neunaber. He did not accept. During the extended pastoral vacancy that followed Pastor Hall's resignation, Rev. Elton Bauerkemper served Good Shepherd. After the first four calls were returned, a new Call List was made and a call extended

to Rev. Paul J. Schumacher, a native of Louisville, Kentucky, on November 22, 1957. Pastor Schumacher was on his first assignment in the Paris, Clarksville and Sulphur Springs parish of NE Texas, following graduation in 1955 from Concordia Seminary, St. Louis. He accepted the call and was installed as the second Pastor of Good Shepherd on January 5, 1958. Pastor Schumacher was married, but had no children.

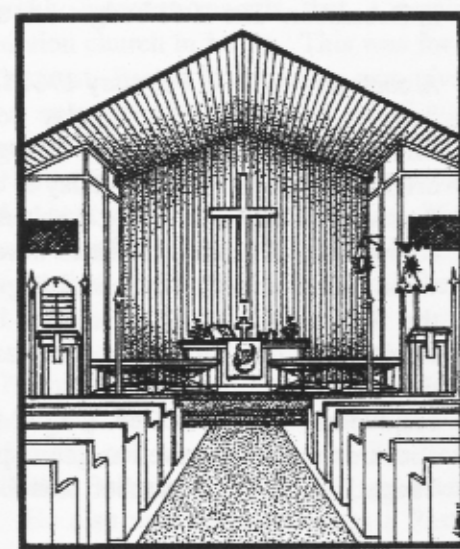
June 9, 1957 Approved connecting to City water & Lone Star Gas company.

October 11 Approved acceptance of pews from Zion Lutheran, Dallas.

December 13 Adopted a budget of \$17,680 for 1958.

### Growth

Events and actions in 1958 and 1959 indicated a growing congregation. In the spring of 1958 partitions were built for use in the back of the parish hall to separate Sunday School classes. In September, \$4,500 was approved to curb, gutter and pave the front parking lot and to pour sidewalks. Early in 1959 the Sunday school was using some of the upper rooms of Southwest Bank & Trust Company where Good



Shepherd had moved its banking account the previous year. This bank was located next door to the east of Good Shepherd. The 1959 budget, original amount unknown, was revised in April to \$23,126.40. In November the congregation was billed \$849.60 by the City for curbing of Grauwlyer\*

\* Grauwlyer Street, pronounced "Garwheeler," was named after John Grauwlyer, a native of Basel, Switzerland, who came to the United States in 1854 at age 17 and eventually ended up farming 365 acres of land near Bachman Lake in Dallas. There he served five years as road overseer and this is possibly why a street was named for him

Street, which forms the north boundary of church property. Membership at the end of 1959 stood at 228 Communicants and 396 Souls. Additional room was needed. At the January 1960 Voters' Assembly, attention was given to a building program with priority for an Education Wing. Fisher-Jarvis, Architect, was given approval to proceed with working drawings for adding classrooms to the east side of the Parish Hall. Authorization was also given for the issuance of \$200,000 of Debenture Bonds for financing an extensive building program. Some of the money raised from the bonds was used to retire the Mission Board debt of \$27,447.65. In the October 1960 Voters' meeting, reference was made in the minutes to a "Church Council," however; a note is added that the Voters' Assembly will still approve expenditures. Note that council meeting minutes cannot be found prior to June 11, 1969. Building plans for classrooms were finally accepted in December. The 1961 budget was set at \$30,000.

A contract was let in February 1961 for the amount of \$58,829, to construct the first expansion, the "Sunday School Wing" (additional classrooms). This gabled expansion, 87'-6" long x 50' wide, extended east from the original restrooms across today's breezeway and included the current Pastor's office, East Wing kitchen and mailroom. Construction was completed and the new facilities were placed in service in September 1961, when a mid-week Bible School began. Average Bible School attendance the first month was 53. Early in 1962 a \$7,000 remodeling job of the original facilities was begun, and was completed in May. This then lead to dedication on June 10, 1962, of the 1961 expansion and the 1962 remodeling work. The Rev. Virgil Mayer, from Messiah Lutheran Church, Richardson, Texas served as guest speaker at the 3 PM service. The 1963 budget, adopted in December, was for \$42,675.

Good Shepherd, by virtue of its membership in the LCMS, became a member of the Council of Missouri Synod Lutheran Churches of Greater Dallas and remained a member until 1971 or later. Earl Woodard was Good Shepherd's representative to that organization for many of those years and in 1967 served as Chairman of its Board of Directors. An arm of this organization, *The Dallas Lutheran* (newspaper), in its March 1963 issue, was complimentary of the expanding ministry at Good Shepherd which had resulted in 31 adult confirmations and four professions of faith in 1962. It went on to say that the Walther League was doing well and there were six Circles in the Lutheran Women's Missionary League.

Membership was reported to be 378 communicants and 628 baptized. Goals were set to attain an average attendance of 400 at Sunday worship and a Choir membership of 25. The Master Plan of the church called for a Sanctuary seating 500.

A used Farmall Cub tractor was purchased in April 1963 primarily for lawn care. In September a Kindergarten was begun with an enrollment of 16. Miss Verleen Saathoff served as the teacher for \$300/month. The 10<sup>th</sup> Anniversary was celebrated on Sunday, October 20. Rev. Fred Schumacher, older brother of Pastor Paul Schumacher, was the guest speaker. A 10<sup>th</sup> Anniversary Booklet was published. In December a budget of \$47,225 was adopted for 1964.

The April 1964 Voters' Assembly minutes records that a seminary graduate was called for a new mission church in Irving. This was for Our Redeemer. In response to his request, Pastor Schumacher was given a Peaceful Release June 7, effective on a day of his choosing, which turned out to be August 31. He had been attending school part time at Southern Methodist University, and later North Texas University, working toward a doctoral degree. He now wanted to continue that pursuit full time. His six years of "shepherding" at Good Shepherd was also blessed in that membership had doubled and the physical plant was increased with the first expansion.

In July a call was issued to Rev. Norman Behrmann, who was married with three children, and who was serving Redeemer Lutheran Church in Wichita, Kansas. He accepted the call and was installed on Wednesday evening, September 16, 1964. Pastor Behrmann was a 1950 graduate of Concordia Seminary, St. Louis. He also was then serving as a Pastoral Advisor on the National Walther League Executive Board. That same month the First Grade was added to the Day School. On November 1, it was recorded that 190 students attended Sunday school. Mid-week Bible School began with an enrollment of 42. Communicant membership stood at near 400 in December and a budget of \$49,808 was approved for 1965.

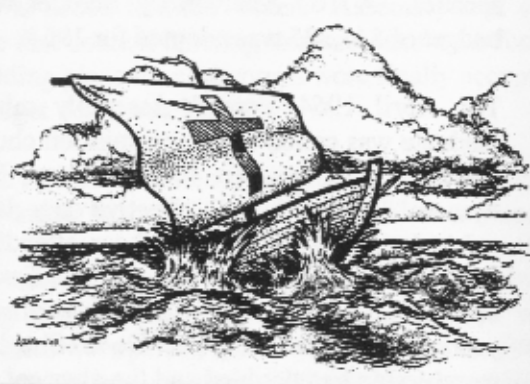
The Second Grade was added to the Day School in September of 1965 and plans were made to have the first pictorial directory. Early in 1966, the budget associated with "Our Work Program for 1966" amounting to \$57,000, was adopted. In the fall of 1966 the Day School had an

enrollment of 23 in Kindergarten, 10 in 1<sup>st</sup> grade, and 12 in 2<sup>nd</sup> grade. Mid-week Bible school had an enrollment of 62.

### Conflict

Within the LCMS, disagreements and conflicts had apparently been going on for a number of years over a range of subjects. Resolutions passed at the 1965 Synod Convention, held in Detroit, caused both Pastor Behrmann and Good Shepherd to eventually become involved. In the January 1967

Voters' meeting, Pastor Behrmann suggested that the resolutions be studied and accepted or rejected, in whole or in part. At the next meeting in February, the Voters approved writing a letter to Dr. Oliver Harms, President of the LCMS, encouraging him to make haste in



establishing Fellowship with the American Lutheran Church (ALC) and with other Lutheran bodies with which LCMS has doctrinal agreement. On the local scene, a Youth Minister or Worker arrived for work in June, and Grade 3 was added to the Day School, starting in September.

An unusual action took place at the April 7, 1968 Voters' meeting, when the Voters authorized contacting Southwest Bank and Trust Company, next door, to learn if it was interested in buying the church property. If not, then Good Shepherd wanted to proceed with expansion plans. Soon thereafter the Bank responded to Good Shepherd's inquiry with a bid of \$400,000. This was immediately rejected by the Voters. Other action at this meeting included: 1) reducing the number of Voter meetings from monthly to quarterly, 2) changing the fiscal year to June 1 - May 31 to more closely coincide with the Day School year, and 3) expanding the Church Council from 12 to 14 members. Reduction of Voters' meetings was a welcome relief because it was commented that many hours were spent at these monthly meetings arguing over trivial matters. In the fall of 1968, Grade 4

was added to the Day School. The school staff was expanded to four teachers for an enrollment of 73. And after eight years in the Bond business, status as of November 10, 1968 was as follows:

Issued -- \$112,950    Paid -- \$15,625    Outstanding -- \$97,325

The second expansion of facilities took place in 1969 by expanding the East Wing. A section 48' - 6" long x 50' wide was added to the east side of the Pastor's office and Day School office (now the mailroom). No evidence has been found of formal dedication of this addition. This area was ready for use when school opened in the fall and Grade 5 was added. In other actions, the Voters approved enrollment in the Bethel Bible Series, which began in the fall of 1971, and the Council agreed to study the book *Confirmation and First Communion* for its relevance to Good Shepherd.

Upon Pastor Behrmann's return from the 1969 Synod convention held in Denver, he reported that Women's Suffrage was allowed, and that the Voters may want to consider changing the Constitution. The Lutheran Women's Missionary League requested that due consideration be given to Women's Suffrage. Consequently, the Constitution was changed and the first 13 women voters were accepted on May 10, 1970; 10 more were accepted at the next Voters' meeting on July 6. In a Council meeting June 8, 1970, it was reported that the Sunday school had an 11 member staff, 23 regular teachers and 20 substitutes, possibly a record. On the other hand, Sunday, June 7, Worship attendance hit a five year low of 151. Grade 6 was added in September and a fifth teacher, Alan Ray Dormann, was added to the Day School staff.

Day School salaries were raised effective with start of school year 1971: teachers - \$380/mo to \$425/mo; principal - \$650 to \$700/mo. Russell Reese was called to be Principal for the fall semester and Glen Oswald was called to be Youth Minister, both jobs starting about mid-year. It was noted that the Day School would experience its first 6<sup>th</sup> grade graduating class the following May. In late 1971, Good Shepherd participated in the Billy Graham Crusade held at Texas Stadium. Loraine Kelley and Ken Lewis served as representatives.

Early in 1972, Oswald Hoffman reported that the average Sunday School attendance in 1971 was 259. He also reported that a Sunday School class for the mentally retarded was being started. On a broader level, Good



Shepherd sent in its nominations for President and Vice-President of Synod, Oswald Hoffman (Lutheran Hour speaker) and August Bernthal, respectively. The congregation considered how it might celebrate or commemorate the Synod's 125<sup>th</sup> Anniversary and its own 20<sup>th</sup> Anniversary.

Pastor Behrmann had a heart attack during the summer of 1973 and was not able to resume full duty until December. Rev. Carl Lutz, a graduate of Concordia Seminary, St. Louis, served as vacancy pastor during Pastor Behrmann's incapacity. One result of the heart attack was that the Voters, in their November meeting, approved calling an Assistant Pastor. Serving this large a congregation was a load in itself on one pastor and the added stress from dissention with the Synod was possibly too much. It was also mentioned in a council meeting that Pastor Behrmann had been elected as state representative for the protest movement within Synod. Whether he ever functioned as such was not reported. In other local action, consideration was given to establishing a Board of Christian Education for the congregation.

While problems were continuing in and with the LCMS, a flash point was reached when Dr. John Tietjen, President of Concordia Seminary, St. Louis, was suspended on January 21, 1974, supposedly for teaching false doctrine or permitting the same at Concordia. A letter, dated January 24, was then sent from Tietjen to all congregations in the Synod, it appears, explaining his position. Good Shepherd received one and it stirred further action. At the February 17, 1974 meeting, the Voters agreed to:

- 1) formally dissent with "A Statement of Scriptural and Confessional Principles," as adopted at the 1973 New Orleans convention of the LCMS.
- 2) withhold one half of budgeted funds for District.
- 3) encourage President Carl Heckmann to withhold a portion of District funds from Synod until Synod begins to act in the spirit of the Gospel towards Dr. Tietjen, Rev. Mayer, etc.
- 4) individually and corporately repent of those actions which have contributed to the existing dissention.

President Heckmann soon gave a negative response to the withholding of funds. Later, in July, the Voters approved calling Ray Zischang as Assistant Pastor. Ray was a recent graduate from the "Lutheran Seminary in Exile." This seminary was made up of the former Concordia Seminary,

faculty and students, at St. Louis that had left campus following Dr. Tietjen's suspension and had resumed classes on the campuses of St. Louis University and Eden Seminary in St. Louis. Calling/placing of this 1974 class of Pastoral Candidates was a complicated and controversial issue since the seminary was operating independently of the LCMS and out of its control. Zischang accepted the call, and was ordained and installed by Rev. Robert Studtmann from Kansas, at Good Shepherd in a 4 PM service on Sunday, September 8, 1974. No one from the Texas District of the LCMS participated in the service even though the President and one or more Vice Presidents from District were asked. President Heckmann had declined based on a prior commitment.

One of the first duties assigned Pastor Zischang was taking over the Youth Minister's responsibilities. In the September 9 Council meeting, Pastor Behrmann presented a new framework for mission funds. This appears to be the origin of the Mission Caucus effort, still active today. Pastor Behrmann continued to push expansion of the mission vision of Good Shepherd. Pastor Zischang, in late 1974, reported that possibilities for reconciliation with the LCMS were almost nil and cited several examples why. Russell Reese was given a Peaceful Release as Day School Principal/Teacher, but was asked to remain on as School Administrator to the end of the 1974-75 school year.

Pastor Behrmann and John Fruendt attended a conference in Chicago in February 1975 at which "The Lutheran Church in Mission" was incorporated. Later, in the May 1975 Voters' meeting, where the annual budget was established, there was debate again about sending funds to District. A reduced amount was agreed on. Steve Wenger arrived in June to become Principal/Teacher. About mid-year, Good Shepherd began sponsoring and supporting a Cambodian family. This project continued for over three years.

While dissention with the LCMS continued and representatives of Good Shepherd attended various meetings with opposition (to LCMS) groups, the Voters, in June 1976 approved joining with other Lutheran congregations from Texas, Oklahoma, Kansas and Nebraska to form the Association of Evangelical Lutheran Churches (AELC). Follow-up action took place when, on November 6, the Voters elected delegates to the constituting convention of the Southwest Regional Synod of the AELC to

be held in Oklahoma City on November 12-13, 1976. The delegates were: Pastor Behrmann, Karen Fruendt, and Ken Lewis. During this convention Good Shepherd officially joined the AELC when one or more of its delegates signed in for the congregation. Mount Olive Lutheran Church in Dallas was the only other church in Texas that joined the AELC. Note that representatives Pastor Zischang and John Fruendt attended the 1976 District Convention of the LCMS earlier in the year. At home the Day School Parent-Teacher Organization (PTO) sponsored a carnival to raise money for Day School. Grades 3-6 were eliminated from Mid-week Bible School.

Bond indebtedness at the beginning of 1977 was \$67,800. The Mission Caucus Committee expanded and took on more significance. The chairman of this committee had been given a seat on the Church Council in 1976. Plans began for commemoration and celebration of Good Shepherd's 25<sup>th</sup> Anniversary. Writing of a new Constitution was proposed by Pastor Behrmann. David Davis, Mark Lyons and Pastor Zischang were delegates to the AELC SW Synod Convention in Great Bend, Kansas held on August 5-7. No delegates were sent to the 1977 District Convention of the LCMS or to its Synod Convention held in Dallas that year.

Even though 1978 was the 25<sup>th</sup> Anniversary of Good Shepherd's existence, it was not the best of years in the life and ministry of the congregation. The year began with remaining operating debt from the past year and it grew worse. Sunday School attendance was down 25% from 1976. It was also reported that one or more of the ongoing programs was not working and that the roof was still leaking. In January the leadership of Good Shepherd met with Texas District President Heckmann concerning continuing membership in the LCMS. In April, Good Shepherd received another letter from him in which he expressed willingness to further discuss dual membership in the AELC and the LCMS. While this offer was apparently not accepted, the Council President, Fred LaVail, sent a letter to President Heckmann requesting that the LCMS not cancel Good Shepherd's membership. However, Good Shepherd's membership was terminated in May 1978 by action of the Texas District.

Another setback occurred at the May Voters' meeting when Pastor Behrmann tendered his resignation effective June 4. He expressed his need to rethink his vocation in ministry and to retool for it. Pastor Behrmann

planned to begin Advanced Clinical Pastoral Education study at Baptist Memorial Hospital in San Antonio on June 5. Pastor Zischang, hereby, became the head or senior Pastor. The fiscal year, which ended in May, left considerable debt. Midweek Bible School was discontinued, Thursday evening Services were eliminated and Sunday Worship Services were reduced to one, starting in September. On a more positive note, the Lutheran Book of Worship was approved for purchase and use, and Good Shepherd's 25<sup>th</sup> Anniversary was observed on November 5 with one of its former Pastors, Paul Schumacher, serving as guest speaker. An anniversary booklet was published.

Activities occurring in 1979 included calling Russell Rahn as Day School Principal/Teacher and starting a Day Care, with Lola Dean as Director. It was hoped that the Day Care would compliment the Day School by having a common place for families to leave and pickup their children. In its early days the Day Care broke even financially or made a small profit. Antioch Orthodox Church (or group) requested use of Good Shepherd's facilities for Worship during this time period, but nothing was worked out. While looking for ways to raise money, the possibility of operating a concessions booth at Texas Stadium was first discussed. In mid December Pastor Zischang turned in his resignation effective, January 1, 1980. Several meetings were held late in the year to address this latest event. The Voters agreed to give Pastor Zischang a Peaceful Release. Rev. Mark Herbener, Pastor at Mount Olive Lutheran Church, Dallas, who was also serving as Provincial Counselor (or Regional Director) of North Texas for the SW Synod of the AELC, was asked, and he agreed, to serve as Vacancy Pastor. Rev. Jim Darow, Rev. Ambrose Netzer and Rev. LeRoy Wing filled the pulpit on some of those Sundays.

### Regrouping

The Call Committee, formed in late December 1979, went to work and a call was extended on or about February 24 to Rev. Robert Werberig, a professor at the Seminary in Exile, then known as "Seminex," in St. Louis. His response was positive and he was installed on June 29, 1980 by Rev. Mark Herbener. Pastor Werberig was married and had six children. Although he had been in the parish ministry in Louisiana and Florida prior to becoming a professor at Concordia Seminary in 1965, it was a considerable change to re-acclimate to the life of a parish pastor. One of

his first objectives or projects was to design a logo for Good Shepherd, which he adeptly accomplished. In May, the Council approved operating a Concessions Booth at Texas stadium after over 60 Good Shepherd members had volunteered to help. The first manning of the booth occurred on August 9, 1980. Profits from this venture were designated exclusively for a new Sanctuary. In the fall, Good Shepherd filed for rezoning of its property in order to legally have a Kindergarten with more than 10 students. Rezoning was granted. Other property issues in 1980 included

repair of a main beam in the Sanctuary (weakened by termites), replacement of the water supply line from the water meter on Beacon Hill Street to the south end of the building, and replacement of the cooling tower for the air conditioning system. A joint Reformation Service was observed with Holy Trinity Lutheran Church in Irving, a member of the Lutheran Church in America (LCA).



Word of God

Financial support of the Day School by the congregation was most likely an issue from its beginning. It became divisive in the late 1970s and continued to grow until the School was finally closed. As teacher salaries and other costs increased, the Day School had to be increasingly subsidized by the congregation or it would have priced itself out of business. As school subsidies increased, other needs and wants of the congregation, such as a new Sanctuary, had to be delayed. Another factor was that the ratio of member's children to non-member's children attending Day School was declining and eroding the base of support.

Worship attendance noticeably increased in 1981 over the prior year. Following the close of the school year, a Seminarian from Seminex, Sam Zumwalt, began his intern year training at Parkland Hospital in Dallas. At Pastor Werberig's recommendation, Sam was asked to conduct Worship Services at Good Shepherd once a month in hopes it would both promote his training and be of benefit to Good Shepherd. Later in the year, the congregation was requested to contribute \$3,000 as its prorated share for discussion and start up costs associated with a new church body which the AELC, the ALC and the LCA were working towards.

After considerable effort by Pastor Werberig and others to clarify and update the church membership rolls, it was determined that in early 1982 membership stood at 295 Communicants and 571 Baptized. Average worship attendance was 184. A new building committee led by Jerry Radditz was again at work, Bond indebtedness had been reduced to \$20,900 by August, and another Pictorial Directory was completed by the end of the year. An Elder sponsored Christmas dinner took place the first Sunday evening in December 1982. It has become somewhat of a tradition, having been scheduled every year since then. Committee work continued on new building options and pledges were accepted towards a building program. By May 1983, \$110,000 was pledged toward this effort and the Texas Stadium Project had made over \$18,000. Much work went into keeping the Day School operating, yet in November with an enrollment of 69, the School Board projected expenses to be over budget by about \$19,000. Corrective action had to be taken. After much deliberation and soul searching, the decision was made in February 1984 to close Grades 4, 5, and 6 in May, and ask teacher, Mark Lyons to serve as Principal for the coming school year. Hereby the job of Russell Rahn, Principal, was eliminated, reducing the staff to three. Start of the building program was again delayed.

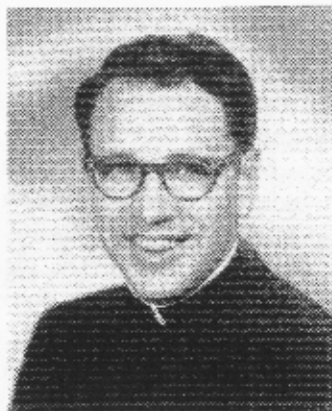
The 1984-85 Day School enrollment reached 64 by November; however, by February 1985, its financial status was not appreciably better than in 1984, and the decision was made to close it at the end of the school year. This ended Good Shepherd's 22 year experience with a Christian Day School. One study indicated that over 715 students had enrolled in the school since its beginning in 1963. The Principal, Mark Lyons, and Teachers, Lorie Appel and Verleen (Saathoff) Gentry, were given a Peaceful Release from their Calls. About mid-1985, Ken Barber became Chairman of the Building Committee and Brown and Brown Architect of Dallas was hired in November.



Ascension

Good Shepherd hosted the SW Regional Synod (of the AELC) Convention May 2-4, 1986. A committee of Good Shepherd members did the planning and coordination for this event, even though some of the activities were





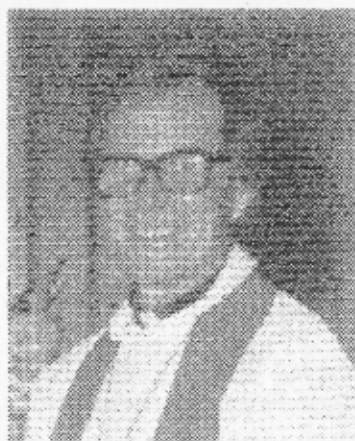
**Lester L. Hall**

August 30, 1953 to  
April 28, 1957



**Paul J. Schumacher**

January 5, 1958 to  
August 31, 1964



**Norman P. Behrmann**

September 13, 1964 to  
June 4, 1978



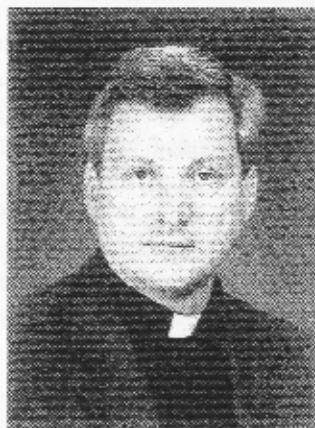
**Ray Zischang**

September 8, 1974 to  
January 1, 1980



**Robert Werberig**

June 29, 1980 to  
March 31, 1995



**Roland Lindeman**

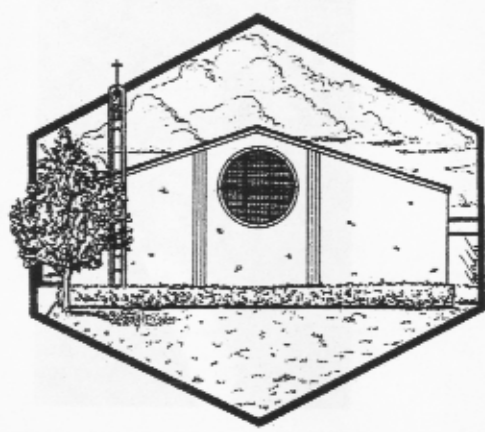
July 7, 1997 to  
Present

held at a nearby hotel. This was the second last Southwest Synod Convention prior to the AELC's merger into the Evangelical Lutheran Church in America (ELCA).

In November 1986 the Voters ratified having two Voters' meetings per year, May and November, and approved a \$600,000 budget for a new sanctuary. By May 1987 building pledges reached \$265,000 and in June a letter was received from Aid Association for Lutherans (AAL), that AAL would look favorably on a loan request in the amount of \$242,200. Ground breaking occurred on June 14, 1987.

### Celebration

On January 1, 1988, the ELCA, the church into which the AELC had merged, became operational. More important locally, Good Shepherd dedicated its New Sanctuary at 4 PM on May 1. The building, with brick exterior and interior, has dimensions of 69' long x 58' wide x 28' high at the peak of its gable. Of contemporary design, it seats 240. The most prominent features are its



stained glass windows and the Cross Tower. The stained glass windows, five on each side of the building, the large diameter Good Shepherd window in the front wall, the Entry window in the narthex and the Tower window were all designed by Pastor Werberig and built by Foster Stained Glass Studios of Brenham, Texas. Cost of the Sanctuary was approximately \$620,000, including about \$60,000 for the Pipe Organ. For the Dedication Service Bishop Mark Herbener served as Dedicator, Pastor Robert Werberig as Celebrant, and Bishop Robert Studtmann as Preacher. After almost 33 years of use for worship, the Parish Hall could now be used for its original intent. Today it is also known as the Fellowship Building or Hall.

Five months later, on October 23, the first Pipe Organ in Good Shepherd's

history, was dedicated. This was a 1909 Hinners organ, which had served two other congregations. It was newly refurbished by the Redman Organ Company of Fort Worth and consisted of 16 stops, 18 ranks and 1035 pipes. It has mechanical key and mechanical stop action. Dr. Walter Pelz, Organist, of Bethany College, Lindsborg, Kansas, introduced the organ and gave a recital at 4 PM. The Dedicatory Celebration was held at 7 PM with Pastor Werberig, Officiant. Steve Lund served as chairman of the Organ Committee.



Baptism

Without a doubt, 1988 was a vintage year for Good Shepherd and a high point for many members. Dedication of the Sanctuary and Pipe Organ was the culmination of many years of praying, working and waiting for this to happen. God blessed both dedication days with beautiful, sunny weather.

Actions taken by the Congregation during the year include, 1) rescinded previous authorization for the use of Good Shepherd's facilities by "Lutherans Concerned," 2) authorized disposal of certain furnishings from the old Sanctuary, 3) changed the fiscal year to coincide with the calendar year, and 4) extended the term of office for current Council members and Elders to the end of the calendar year. Average Worship Attendance which had reached a low of 140, in 1987, began to turn around in 1988. It continued upward through 1991 where it peaked at 182.

Pastor Werberig, together with the congregation, celebrated his 10<sup>th</sup> year at Good Shepherd on Sunday, June 24, 1990, with guest preacher, Bishop Mark Herbener. A congregational dinner and short program followed the late service. Three weeks later, Pastor Werberig reached his 33<sup>rd</sup> anniversary of ordination.

Beginning in 1989 and continuing in the 1990's, Good Shepherd became active in Mission Partners and contributed financial support to several struggling congregations. Our Savior Lutheran Church in Fort Worth was one of the first direct recipients. During this time Pastor Werberig requested and received approval from Good Shepherd to conduct services



Pentecost

three Sunday evenings per month at Peace Lutheran Church in Paris, Texas. In addition, a small group of ethnic Korean Presbyterians asked and received permission to use Good Shepherd's facilities. This lasted for about four or five years until the group disbanded or moved elsewhere.

Both the Pastor's office and the Church office were remodeled and made more accommodating to modern office use in 1993. Good Shepherd's 40<sup>th</sup> Anniversary was celebrated at a combined 10 AM service on Sunday, November 7, 1993 followed by a dinner in the Fellowship Hall. Bishop Mark Herbener was Presiding Minister and Preacher, Pastor Werberig was Assisting Minister and Rev. Ray Zischang, former pastor, was Lector.

Lutheran Congregational Information System (LCIS) 2000 software was installed on the computer in 1994. A document entitled "Buildings/Grounds Use Policy" was developed and placed in effect. Also, planning began for replacing the Air Conditioning System for the Fellowship Hall and Classrooms, the original building and first expansion. Existing equipment, such as the boiler for heating and the ice storage system for cooling, were replaced with conventional gas furnaces and split system refrigeration units. This change was completed in October 1995 at a cost of \$65,000.

### Chastening

The untimely resignation of Pastor Werberig occurred on March 31, 1995. Again the long time friend and helper of Good Shepherd, Bishop Mark Herbener, was called

for assistance. It so happened that a new Pastor, Rev Preston Weatherly, had recently entered the Northern Texas-Northern Louisiana Synod of the ELCA and was looking for work. Good Shepherd asked him to serve as interim Pastor for one year. Thereafter, Rev. Vince Nelson, a retired pastor, was asked to serve a one



Easter

year interim or until a new pastor was installed. Ultimately Rev. Roland Lindeman, married with two children, a native of Nebraska, a 1978 graduate of Seminex and who was serving Good Shepherd of the Hills Lutheran Church in Alpine (near San Diego), California accepted Good Shepherd's call. He was installed on July 20, 1997 and continues as the current Pastor.

During the period just described, Good Shepherd, while trying to develop a new sense of direction, adopted a Mission Statement and a Vision Statement in May 1996. The Mission Statement reads:

**"Nurtured by God the Father, Son, and Holy Spirit,  
we joyfully share God's Word of Love and Forgiveness."**

Work also began on a new constitution using the ELCA Model Constitution as a base. The previous Constitution, extensively revised in 1994, had been submitted to Synod for approval. However, it did not match the current model constitution. The new constitution was ratified in November 1997 and became effective January 1, 1998. Another important event took place in 1997: the purchase of a new Ford tractor, for maintaining the church grounds. It was dedicated by interim Pastor Vincent Nelson on April 13 in a short ceremony following the early service. The used Farmall Cub tractor, purchased in April 1963, had served the congregation for 33 years. It was now ready for a junk yard or a museum. Instead, a member of Good Shepherd, Don Heyden, purchased and skillfully restored it.



Holy Trinity

### Rebounding

Pastor Lindeman's work began showing results as average Worship attendance began increasing in 1998, after reaching another low of 132 in 1996. After several years of wrestling with what to do about the kitchen, the Kitchen Committee, chaired by Michael



Brodowski, established direction and began planning for a new, rather than a remodeled kitchen. Ground was broken on October 15, 2000 and a new Kitchen, 33' wide x 31' long was added to the south end of the original 1955 structure. It was dedicated on February 25, 2001. Cost of this addition, when fully equipped, was approximately \$185,000. The loan for this addition was initially \$130,000, but was reduced to approximately \$104,000 after all contributions were in. On the same day the Kitchen was dedicated, the mortgage note for the 1988 new Sanctuary was burned. It had been paid in full in January.

During the summer of 2002, Good Shepherd was called on to help Santa Maria Lutheran Church, an ethnic Salvadorian congregation which had lost its place of worship. Arrangements were made for Santa Maria to use Good Shepherd's facilities until able to provide its own facilities, expected to be early in 2004. And after 23 years of operation, beginning in August 1979, the Good Shepherd Day Care was closed on January 31, 2003. Much effort and many hours of volunteer labor were invested in the Day Care to keep it operating economically, especially by its one and only Director, Lola Dean. Because of her, a considerable number of young children were told the story of Jesus' love, who might not have heard it otherwise.



Christmas

### Organizations

Little has been said about the various auxiliaries of the church and other organizations that have come and gone or taken other forms. Organizations formed early in the life of the church were:

Walther League	January 4, 1954
Ladies Mission Guild (Women's Club)	March 4, 1954
Men's Club	May 1954
Couple's Club	March 1, 1958
Adult Choir	Sept 12, 1961
Children's Choir	September 1961
Young Disciple's Club	October 1963

The Sunday School, whether or not called an auxiliary, began before the church was organized. It continues as an integral part of the church and probably has a higher ratio of adults to

children, in attendance, than most Lutheran churches.

The Walther League changed its name to the Youth Group either before or at the time of separation from the LCMS. It has functioned as a combined group as it does now or as two groups, one "Senior," the other "Junior." Participation varies and is highly dependent on the resourcefulness of the group's sponsor and/or youth director.

The Adult Choir has maintained its continuity since its beginning in 1961, except for periods when a director was not available. It consistently has some of the most active and faithful members in the congregation, who give a great deal of their time to enhance worship services. Youth choirs are often short lived and are more dependent on the abilities and strengths of the director. Suffice it to say that the Adult Choir has been one of Good Shepherd's strengths and is one of the reasons Good Shepherd is known and recognized as a "singing" church.

While the Circles of the Lutheran Women's Missionary League were a dynamic organization at one time, their numbers declined as women joined the work force. Today there are no formal women's organizations within Good Shepherd. From time to time Bible Study Groups meet at church during the day or in the evening; some weekly, others monthly. Most are mixed groups, yet some are for women only.

Boy Scout and Girl Scout Troops of varying ages have been sponsored by or have met at Good Shepherd during many years of its existence. A Girl Scout Troop currently meets at Good Shepherd. Today the primary auxiliary groups within the church are the Sunday School, the Youth Group and the Adult Choir. Other organizations meeting at Good Shepherd are a drama group, Alanon, Happy Destiny AA and GSLC Garden Club.

An entity within Good Shepherd, not found in most ELCA churches, is the Board of Elders. This is a direct carryover from Good Shepherd's history in the LCMS. Primary duties and responsibilities of the Elders remain the



Good Friday

same: to see that Christian doctrine and discipline are maintained in the congregation and to assist the Pastor in caring for the spiritual well-being of the members. There has been continuity in the Board of Elders since the beginning of the congregation.

The first woman elected president of the congregation was Linda Lewis, for the year 1993.

### Challenges



Epiphany

Over the life and history of the congregation, there have been several recurring issues:

#### Revising the Constitution

Revision of Good Shepherd's Constitution could be compared more with the Constitution of the State of Texas than with the United States, at least in frequency. While no count was made of the revisions, they have been numerous, involving large numbers of man-hours. There have been several major revisions, some the result of the congregation being a member of three different Lutheran bodies. The last major change was made in 1997 when the ELCA model constitution was used as the base. While the current Constitution is longer and

possibly more legalistic than its predecessors, it is also more thorough and is better coordinated with structures of the parent synod and national body.

#### Coping with financial shortages

From the time Good Shepherd borrowed money from the Mission Board of the Texas District in 1954 to construct the Parish Hall, it has periodically faced financial challenges and hardship. The worst of these may have occurred in 1978 during the break with the LCMS and during the latter years (early 1980s) of the Day School when large subsidies were needed to keep it in operation. Well documented meeting minutes indicate that many hours were spent juggling funds to address the most pressing needs, once payroll was met. With God's help, the congregation survived these trials and carried on without external assistance.

### Considerations/proposals to sell property

Along with the financial strains just noted, were frequent considerations and suggestions to sell part of the acreage owned, in order to pay debt. At least once, previously mentioned, consideration was given to sell the entire property, land and buildings, and then relocate. The Bank, next door, on three or more occasions made inquiry for the purchase or lease of land between the East Wing and their building. Cooler, wiser minds prevailed keeping the acreage intact. The acreage to the west of the Parish Hall may be one of the greatest contributions, second only to spreading the Gospel, Good Shepherd has made to the community. It has served as baseball, football and soccer field, as well as general park and play land, for several generations of neighborhood children and adults.



Holy  
Communion

#### Maintaining and leasing the south (rear) Parking Lot

The parking lot on the southeast corner of church property has a history of its own. It has been periodically leased and maintained by the Bank. At other times it has been used freely by bank employees and adjoining property owners. Dealings with the Bank have not always been amiable, yet, differences have been resolved satisfactorily. If one would study the history of this relationship, he most likely would conclude that the Bank has been rather generous to Good Shepherd.

#### Bonds

From the time Debenture Bonds were first approved for issue in 1960 to finance the first expansion, the time for their repayment often caused alarm and concern, because the money was not available. Bart Messler, Lee Brodowski, Guy Denny and others who served as Bond Chairman, became familiar with this problem. The value of outstanding Bonds reached a peak of about \$110,000 in the mid 1960's and the last Bond was paid off in January 1986. Whether or not the Bonds were a help or a hindrance to the mission of the church could be debated, but they were part of the financial picture for about 25 years.

## Conclusion

For the past six years Good Shepherd has experienced "smooth sailing" on relatively calm waters. Under the able leadership of Rev. Roland Lindeman, Word and Sacrament continue to be preached and administered as in the preceding 50 years. Proclamation of the Gospel remains central to the mission of the church. For whatever challenges occur in the future, there are most likely precedents in its history, from which its members can draw. Catherine Woodard, the only surviving adult at time of Charter, who is still a member, had this to say:

"The Lord must surely love Good Shepherd because the Bible says, 'Whom the Lord loves, he chastens,' and he has really chastened our church over the years."

May the Lord continue to bless and keep Good Shepherd Lutheran Church.

Luther P. Dube  
October 1, 2003

Please refer to the following pages for a list of Charter Members and a Time Line History.

## Charter Members – 137 Good Shepherd Lutheran Church Charter Membership was open from November 8, 1953 through January 3, 1954.

Mr. & Mrs. Fred Baumgardner,  
Freddie Wayne  
Mr. Oscar Benovsky  
Mr. & Mrs. John F. Bogner,  
Ronne Langenheder  
Mr. & Mrs. Kenneth Cornell  
Mr. & Mrs. Cecil Craft, Cecil H.,  
Beverly Ann, Rickie F.  
Mr. & Mrs. Jasper Davis, Jasper G., Jr.  
Mr. & Mrs. G. Frank Drum, Raymond P.,  
Ruth Katheryn  
Mr. & Mrs. Robert J. Dunn, Jerry Wayne  
Mr. & Mrs. Arthur E. Ebert, David, Ruth,  
Beth, Rebecca Jean  
Mrs. J. Louis Gamble, Charles Clifton  
Mr. & Mrs. Charles E. Garner, Charles H.,  
Helen, Carl Richard, David Eugene, Patricia Anne  
Mrs. William George, Connie Lee,  
Vicki Ann, William A., Jimmy L.  
Rev. & Mrs. Lester L. Hall  
Mr. & Mrs. Alvin Hewitt, Patricia,  
Marlene Kay  
Mr. & Mrs. Ray Highfill, Raymond C., Jr.,  
William Arthur, Marilyn Diane  
Mr. & Mrs. Mike Janosko, Ellen D.,  
Karen Lynn, Kenneth R.  
Mr. & Mrs. Lee Johnson, Robert Lee,  
William Arthur  
Mrs. Peter (Ann) Johnson, Jean Ann,  
Linda Susan  
Mr. & Mrs. Eric Kasper, Jr., Eric Jacob, III,  
Mary Eloise, Patricia Ann  
Mr. Nolan Kelm  
Mr. & Mrs. Thomas F. Maahs, Sr., Alma, Elmer,  
Frieda, Thomas C., Jr.



### Church Charter Members – Continued

Mrs. W. E. H. Mitchell, Pete Allen  
Mr. & Mrs. James Osicka, Jimmy Wayne  
Dorothy, Helen & Sandra Richardson  
Mrs. Ernest Schanz  
Mr. & Mrs. Herbert G. Schukar, Ann Marie,  
Howard F.  
Mrs. Johanna Schukar  
Mr. & Mrs. Larry Seidner, Gail Marie,  
Janis Mae, Beverly Ann  
Mr. & Mrs. Jerald Sharp, Sr., Jerald, Jr.,  
Glen Spencer  
Patricia Ann, James Michael, Robert Ross &  
Sandra Sue Sistrunk  
Mr. & Mrs. Don Stevens, Sharon, Gerald,  
Donna L.  
Mr. & Mrs. Paul Terrell, Judy L., Brian S.  
Mr. & Mrs. William R. Turner, Linda Jean,  
William Robert, Jr.  
Mr. & Mrs. Wymer G. Vogel, Douglas John,  
Sandra Jean  
Robert Ray, Sherry Patricia & Rebecca Lee  
Wallace  
Steven Ray & Billy Michael White  
Mr. & Mrs. Frank Wilson, Ralph, Carol Lynn,  
Mr. & Mrs. Earl Woodard, Thomas, Lawrence,  
Mary Catherine

## FIFTY YEARS

At

## GOOD SHEPHERD LUTHERAN CHURCH

<u>1953</u>	November 8	Officially organized under a constitution - Rev. Lester L. Hall, Pastor
<u>1955</u>	August 7 August 15-26 October 7	Parish Hall dedicated First Vacation Bible School Conducted GSLC became financially self-sustaining
<u>1958</u>	January 5	Rev. Paul J. Schumacher installed
<u>1961</u>	September	Mid-week Bible School began
<u>1962</u>	June 10	Sunday School Wing (1 <sup>st</sup> expansion) dedicated
<u>1963</u>	September October 20	Kindergarten began Observed 10 <sup>th</sup> Anniversary
<u>1964</u>	September September 16	First Grade added Rev. Norman P. Behrmann installed
<u>1965</u>	September	Second Grade added
<u>1967</u>	September	Third Grade added
<u>1968</u>	September	Fourth Grade added
<u>1969</u>	May September	East Wing expanded (2 <sup>nd</sup> expansion) Fifth Grade added
<u>1970</u>	September	Women's Suffrage approved Sixth Grade added
<u>1971</u>		Bethel Bible Series & LIT (Lay Institute of Theology) began
<u>1972</u>		Thursday Evening Worship Service began
<u>1974</u>	September 8	Rev. Ray Zischang ordained & installed as Associate Pastor
<u>1976</u>	November 12-13	Became Charter Member of Southwest Synod of AELC
<u>1978</u>	May June November 8	Membership in the LCMS ended Rev. Ray Zischang became head Pastor Observed 25 <sup>th</sup> Anniversary
<u>1979</u>	August	Lutheran Book of Worship use began Day Care began
<u>1980</u>	June 29 August 9	Rev. Robert Werberig installed Texas Stadium Concessions Project began
<u>1982</u>	May	New Sanctuary Committee formed
<u>1984</u>	May	Grades 4, 5, & 6 of Day School closed
<u>1985</u>	May	Day School closed

## FIFTY YEARS – Continued

<u>1988</u>	January 1	Became members of ELCA
	May 1	New Sanctuary dedicated
	October 23	Pipe Organ dedicated
<u>1993</u>	Spring	Office area of East Wing remodeled
	November 7	Observed 40 <sup>th</sup> Anniversary
<u>1994</u>	November	Lutheran Congregational Information System 2000 software installed
<u>1995</u>	March 31	Rev. Werberig resigned
	June 1	Rev Preston Weatherly began interim Ministry
	October	New AC System for Fellowship Building & Classrooms
<u>1996</u>	May 1	Rev. Vincent Nelson began interim ministry
<u>1997</u>	April 13	New Tractor dedicated
	July 20	Rev Roland Lindeman installed
<u>1998</u>	August	Sunday evening contemporary worship service began
<u>2001</u>	February 25	Burned 1988 Sanctuary Mortgage Note
		New Kitchen dedicated
<u>2003</u>	January 31	Day Care Closed
	November 8	50 <sup>th</sup> Anniversary

# GOOD SHEPHERD LUTHERAN CHURCH

## Data & Statistics 1953 - 2003

Year	Pastor	President	Budget	Bapt	Comm	Worsh	S Sch	S Sch	D Sch	V B Sch	Mid Wk	Significant Events & Comments
				Memb	Memb	Attend	Attend	Enroll	Enroll	Attend	BS Att'd	
1953	Hall, Lester	Ebert, Arthur		137	72			115				Organized November 8
1954	Hall, Lester	Ebert, Arthur	\$8,720	186	94	136		170				Purchased Land in January
1955	Hall, Lester	Ebert, Arthur	\$10,760	260	132	160		189		195		Dedicated Parish Hall August 7
1956	Hall, Lester	Gomillion, Davis		319	162		110	221		170		Purchased 16' wide strip of land parallel to Beacon St
1957	Hall, Lester	Becker, Milton	\$17,685	332	170			149				Rev Hall resigned April 28
1958	Schumacher, Paul	Woodard, Earl	\$17,680	349	191			182		99		Rev Schumacher installed January 5
1959	Schumacher, Paul	Gomillion, Davis	\$23,126	394	228			181		74		Installed curbing on Grauwylar St
1960	Schumacher, Paul	Gomillion, Davis		447	259			234		70		Authorized issuance of \$200,000 in Debenture Bonds
1961	Schumacher, Paul	Jorgenson, Ken	\$30,000	509	300			252		143	43	Began midweek Bible School in September
1962	Schumacher, Paul	Jorgenson, Ken		620	374			279		108	50	Dedicated first expansion on June 10
1963	Schumacher, Paul	Porath, Ben	\$42,675	688	429			295	16	110	42	Began Kindergarten; LWML has 6 Circles
1964	Schumacher/Behrmann	Porath, Ben	\$47,225	642	381		190	268	32	111	50	P Schumacher resig'd Aug 31; P Behrmann Inst'l Sep 16
1965	Behrmann, Norman	Starnes, Charles	\$49,808	688	416			325	36	119	72	Began grade 2; approved pictorial directory
1966	Behrmann, Norman	Brodowski, Lee	\$57,000	696	433			277	45	129	65	Developed & used "Our Work Program"
1967	Behrmann, Norman	Quasebarth, Marion	\$59,523	803	480			313	63	163	77	Signs of problems with LCMS; began grade 3
1968 to Jun	Behrmann, Norman	Hill, Roger	\$67,077									Approved qtrly Voters mtg & fiscal year - June to May
1968 - 69	Behrmann, Norman	Hill, Roger	\$75,000	850	501			362	73	146	86	East Wing expanded; began grade 4
1969 - 70	Behrmann, Norman	Haase, John	\$70,131	840	520			373	76	135	82	Began grade 5; approved Women's Suffrage
1970 - 71	Behrmann, Norman	Haase, John	\$70,210	869	525	342	259	339	73	133	87	Began grade 6; called a Youth minister
1971 - 72	Behrmann, Norman	Barber, Ken	\$69,100	857	498	334		259	62		77	Lowered voting age to 18; approved two Voter mtgs/yr
1972 - 73	Behrmann, Norman	Kriegel, Martin	\$80,902	872	520	407	113	241	105		77	Began Sunday School class for mentally retarded
1973 - 74	Behrmann, Norman	Fruendt, John	\$75,620	847	502	343		181	97	40	44	Pastor suff heart attach; Tietjen suspend'd @ Concordia
1974 - 75	Behrmann/Zischang	Haase, John	\$86,450	736	459	280		202		65	61	Rev Ray Zischang installed as Assist Pastor 8 Sep '74
1975 - 76	Behrmann/Zischang	Barber, Ken	\$94,001	759	471	288		190	93	86	76	Controversy with LCMS increasing
1976 - 77	Behrmann/Zischang	Wiederaenders, Geor	\$110,505	897	485	250		168		90	53	Joined The AELC @ its Constitution Conv 12-13 Nov 76
1977 - 78	Behrmann/Zischang	LaVail, Fred	\$115,416						80			Rev Behrmann resigned 4 Jun 78; approved using LBW
1978 - 79	Zischang, Ray	Lewis, Ken	\$109,304	816	464				85			Membership in LCMS ends; Celebr 25th Anniv 5 Nov 78
1979 - 80	Zischang, Ray	Halter, Ed	\$89,827				65		88			Began Day Care Aug 79; Rev Zischang resigned 1 Jan 80
1980 - 81	Werberig, Robert	Halter, Ed	\$88,318							None		Rev Werberig inst'l 29 Jun 80; began Tx Stad Proj 9 Aug
1981 - 82	Werberig, Robert	Lucas, Marvin	\$100,532	571	295	184	82					Intern Sam Zumwaldt serving 1 Sunday/month
1982 - 83	Werberig, Robert	Barber, Ken	\$112,155									Tex Stad Proj beginning 4th yr; \$18,598 profit in 1st 3 yrs
1983 - 84	Werberig, Robert	Fruendt, John	\$119,241			170			69			App'd closing gdes 4, 5, & 6 @ end of school year 1984
1984 - 85	Werberig, Robert	Moore, Rocky	\$126,105			156			64			App'd closing Day School @ end of school year 1985
1985 - 86	Werberig, Robert	Denny, Guy	\$127,727			149						Hosted AELC SW Synod Convention May 2-4, 1986
1986 - 87	Werberig, Robert	Denny, Guy	\$135,675			143						Approved 2 Voter mtg/yr & \$600K for new Sanctuary
1987 - 88	Werberig, Robert	Denny, Guy	\$134,980			140						Merged into ELCA; dedicat new Sanctuary 1 May 1988



## Data &amp; Statistics 1953 - 2003

Data was obtained from Parochial Reports for the years 1953 -1976 and 1998 - 2002 and from N TX - N LA Synod annual meeting reports for 1988 - 1997. The remaining numbers come from Voters Meeting Minutes, Council Meeting Minutes, and various other documents found in church files. An attempt was made to find comparative numbers wherever possible, but this could not be done in all cases.